



Test Report

No. NGBML1402932201

Date: 15 Sep 2014

Page 1 of 5

The following sample(s) was/were submitted and identified on behalf of the clients as : STAINLESS STEEL DOUBLE WALL TUMBLER

SGS Job No. : NBMLC140900061 - NB  
Product Specification : 17\*10CM  
Date of Sample Received : 09 Sep 2014  
Testing Period : 09 Sep 2014 - 16 Sep 2014  
Test Requested : Selected test(s) as requested by client.  
Test Method : Please refer to next page(s).  
Test Results : Please refer to next page(s).

Result Summary :

Test Requested	Conclusion
FDA 21 CFR 177.2600- Total Extractives (sample 002)	PASS
Total chromium (FDA GRAS) (sample 001)	PASS

Signed for and on behalf of  
SGS-CSTC Ltd.

Iris Xiao  
Approved Signatory



This document is issued by the Company subject to its General Conditions of Service printed overleaf, available on request or accessible at <http://www.sgs.com/en/Terms-and-Conditions.aspx> and, for electronic format documents, subject to Terms and Conditions for Electronic Documents at <http://www.sgs.com/en/Terms-and-Conditions/Terms-e-Document.aspx>. Attention is drawn to the limitation of liability, indemnification and jurisdiction issues defined therein. Any holder of this document is advised that information contained hereon reflects the Company's findings at the time of its intervention only and within the limits of Client's instructions, if any. The Company's sole responsibility is to its Client and this document does not exonerate parties to a transaction from exercising all their rights and obligations under the transaction documents. This document cannot be reproduced except in full, without prior written approval of the Company. Any unauthorized alteration, forgery or falsification of the content or appearance of this document is unlawful and offenders may be prosecuted to the fullest extent of the law. Unless otherwise stated the results shown in this test report refer only to the sample(s) tested.  
Attention: To check the authenticity of testing /inspection report & certificate, please contact us at telephone: (86-755) 8307 1443, or email: [CN.Doccheck@sgs.com](mailto:CN.Doccheck@sgs.com)

SGS-CTC Standards Technical Services Co. Ltd  
Ningbo Branch Laboratory

125F West No. 4 Building, Linyen Industry Park, No.1177 Linyen Road, Ningbo National Hi-Tech Zone, Ningbo, China 315040 tE&E (86-574) 89070224 fE&E (86-574)87782095 www.sgs.com.cn  
中国·宁波·国家高新区凌云路1177号凌云产业园4号楼西1-2.5层 邮编: 315040 tHL (86-574)89070209 fHL (86-574)87768122 e [sgs.china@sgs.com](mailto:sgs.china@sgs.com)

Member of the SGS Group (SGS SA)



Test Report

No. NGBML1402932201

Date: 15 Sep 2014

Page 2 of 5

Test Results :

Test Part Description :

Specimen No.	SGS Sample ID	Description	Material (claimed by the client)
SN1	NGB14-029322.001	SILVER GRAY STAINLESS STEEL TUMBLER BODY	STAINLESS STEEL
SN2	NGB14-029322.002	WHITE SILICONE RUBBER RING	SILICONE RUBBER

FDA 21 CFR 177.2600- Total Extractives (sample 002)

Test Requested : As specified by client, to determine the amount of total extractives from rubber articles intended for repeated use for compliance with Food and Drug Administration Regulations.

Test Method : With reference to FDA 21 CFR 177.2600.

Simulant Used	Time	Temperature	Max. Permissible Limit	Result of 002 Total Extractives
Distilled Water	7.0hr(s)	Reflux temperature	20mg/inch <sup>2</sup>	<0.5mg/inch <sup>2</sup>
Succeeding Extraction	2.0hr(s)	Reflux temperature	1mg/inch <sup>2</sup>	<0.5mg/inch <sup>2</sup>

Total chromium (FDA GRAS) (sample 001)

Test Requested : For compliance with the General Recognized As Safe (GRAS) specification according to United State Food and Drug Administration (US FDA) Regulations on stainless steel - total chromium content.

Test Method : Acid digestion, followed by analysis using ICP-OES.

Test Item(s)	Limit	001
Total Chromium,%	≥16	16.2



This document is issued by the Company subject to its General Conditions of Service printed overleaf, available on request or accessible at http://www.sgs.com/en/Terms-and-Conditions.aspx and, for electronic format documents, subject to Terms and Conditions for Electronic Documents at http://www.sgs.com/en/Terms-and-Conditions/Terms-e-Document.aspx. Attention is drawn to the limitation of liability, indemnification and jurisdiction issues defined therein. Any holder of this document is advised that information contained hereon reflects the Company's findings at the time of its intervention only and within the limits of Client's instructions, if any. The Company's sole responsibility is to its Client and this document does not exonerate parties to a transaction from exercising all their rights and obligations under the transaction documents. This document cannot be reproduced except in full, without prior written approval of the Company. Any unauthorized alteration, forgery or falsification of the content or appearance of this document is unlawful and offenders may be prosecuted to the fullest extent of the law. Unless otherwise stated the results shown in this test report refer only to the sample(s) tested. Attention: To check the authenticity of testing /inspection report & certificate, please contact us at telephone: (86-755) 8307 1443, or email: CN.Doccheck@sgs.com

SGS Standards Technical Services Co. Ltd  
Ningbo Branch Laboratory

1-25F West No. 4 Building Lingyin Industry Park, No.1177 Lingyin Road, Ningbo National Hi-Tech Zone, Ningbo, China 315040 t E&E (86-574) 89070224 f E&E (86-574) 87782095 www.sgsgroup.com.cn  
中国·宁波·国家高新区凌云路1177号凌云产业园4号楼西1-2.5层 邮编: 315040 t HL (86-574) 89070209 f HL (86-574) 87768122 e sgs.china@sgs.com

Member of the SGS Group (SGS SA)



## Test Report

No. NGBML1402932201

Date: 15 Sep 2014

Page 3 of 5

### Remark:

- (1) mg/inch<sup>2</sup> = milligram per square inch
- (2) < = less than
- (3) ≥ = great than or equal to
- (4) hr = hour
- (5) % =percentage by weight



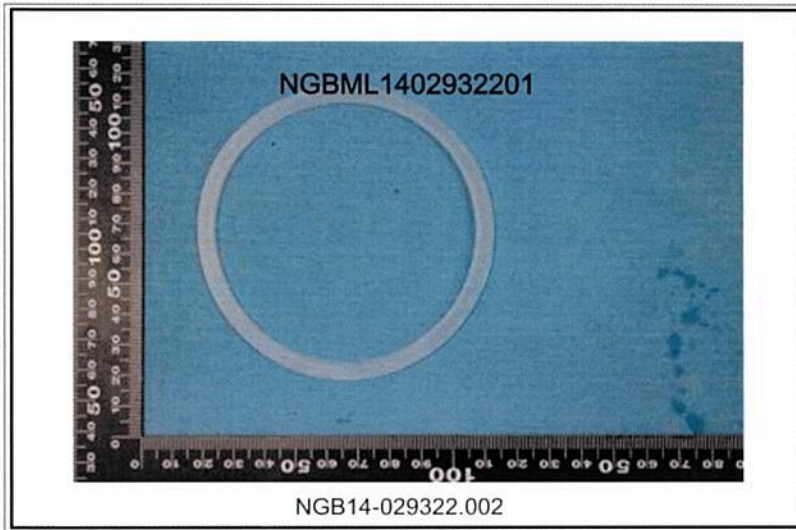
This document is issued by the Company subject to its General Conditions of Service printed overleaf, available on request or accessible at <http://www.sgs.com/en/Terms-and-Conditions.aspx> and, for electronic format documents, subject to Terms and Conditions for Electronic Documents at <http://www.sgs.com/en/Terms-and-Conditions/Terms-e-Document.aspx>. Attention is drawn to the limitation of liability, indemnification and jurisdiction issues defined therein. Any holder of this document is advised that information contained hereon reflects the Company's findings at the time of its intervention only and within the limits of Client's instructions, if any. The Company's sole responsibility is to its Client and this document does not exonerate parties to a transaction from exercising all their rights and obligations under the transaction documents. This document cannot be reproduced except in full, without prior written approval of the Company. Any unauthorized alteration, forgery or falsification of the content or appearance of this document is unlawful and offenders may be prosecuted to the fullest extent of the law. Unless otherwise stated the results shown in this test report refer only to the sample(s) tested.

Attention: To check the authenticity of testing /inspection report & certificate, please contact us at telephone: (86-755) 8307 1443, or email: [CN.Doccheck@sgs.com](mailto:CN.Doccheck@sgs.com)

SGS-CTD Standards Technical Services Co. Ltd | 1/25F West No. 4 Building, Lingyan Industry Park, No.1177 Lingyan Road, Ningbo National Hi-Tech Zone, Ningbo, China 315040 t E&E (86-574) 89070224 f E&E (86-574)87782095 www.sgs.com.cn  
Ningbo Branch Laboratory | 中国·宁波·国家高新区凌云路1177号凌云产业园4号楼西1-2.5层 邮编: 315040 t HL (86-574)89070209 f HL (86-574)87768122 e [sgs.china@sgs.com](mailto:sgs.china@sgs.com)

Member of the SGS Group (SGS SA)

Sample photo:



SGS Standards Technical Services Co., Ltd.  
Ningbo Branch Laboratory

This document is issued by the Company subject to its General Conditions of Service printed overleaf, available on request or accessible at <http://www.sgs.com/en/Terms-and-Conditions.aspx> and, for electronic format documents, subject to Terms and Conditions for Electronic Documents at <http://www.sgs.com/en/Terms-and-Conditions/Terms-e-Documents.aspx>. Attention is drawn to the limitation of liability, indemnification and jurisdiction issues defined therein. Any holder of this document is advised that information contained hereon reflects the Company's findings at the time of its intervention only and within the limits of Client's instructions, if any. The Company's sole responsibility is to its Client and this document does not exonerate parties to a transaction from exercising all their rights and obligations under the transaction documents. This document cannot be reproduced except in full, without prior written approval of the Company. Any unauthorized alteration, forgery or falsification of the content or appearance of this document is unlawful and offenders may be prosecuted to the fullest extent of the law. Unless otherwise stated the results shown in this test report refer only to the sample(s) tested.

Attention: To check the authenticity of testing / inspection report & certificate, please contact us at telephone: (86-755) 8307 1443, or email: [CN.Doccheck@sgs.com](mailto:CN.Doccheck@sgs.com)

125F West No. 4 Building, Lingyan Industry Park, No.1177 Lingyan Road, Ningbo National Hi-Tech Zone, Ningbo, China 315040 t E&E (86-574) 89070224 f E&E (86-574) 87782095 www.sgsgroup.com.cn  
中国·宁波·国家高新区凌云路1177号凌云产业园4号楼西1-2.5层 邮编: 315040 tHL (86-574) 89070209 fHL (86-574) 87768122 e [sgs.china@sgs.com](mailto:sgs.china@sgs.com)



SGS authenticate the photo on original report only

\*\*\* End of Report \*\*\*



SGS Standards Technical Services Co. Ltd  
Ningbo Branch

This document is issued by the Company subject to its General Conditions of Service printed overleaf, available on request or accessible at <http://www.sgs.com/en/Terms-and-Conditions.aspx> and, for electronic format documents, subject to Terms and Conditions for Electronic Documents at <http://www.sgs.com/en/Terms-and-Conditions/Terms-e-Documents.aspx>. Attention is drawn to the limitation of liability, indemnification and jurisdiction issues defined therein. Any holder of this document is advised that information contained hereon reflects the Company's findings at the time of its intervention only and within the limits of Client's instructions, if any. The Company's sole responsibility is to its Client and this document does not exonerate parties to a transaction from exercising all their rights and obligations under the transaction documents. This document cannot be reproduced except in full, without prior written approval of the Company. Any unauthorized alteration, forgery or falsification of the content or appearance of this document is unlawful and offenders may be prosecuted to the fullest extent of the law. Unless otherwise stated the results shown in this test report refer only to the sample(s) tested.

Attention: To check the authenticity of testing /inspection report & certificate, please contact us at telephone: (86-755) 8307 1443, or email: [CN.Doccheck@sgs.com](mailto:CN.Doccheck@sgs.com)

1/2,5F West No. 4 Building, Lingyun Industry Park, No.1177 Lingyun Road, Ningbo National Hi-Tech Zone, Ningbo, China 315040 | E&E (86-574) 89070224 | E&E (86-574)87782095 | [www.sgs.com](http://www.sgs.com) | [sgs.china@sgs.com](mailto:sgs.china@sgs.com)  
中国·宁波·国家高新区凌云路1177号凌云产业园4号楼西1-2.5层 邮编: 315040 | HL (86-574)89070209 | HL (86-574)87768122 | [sgs.china@sgs.com](mailto:sgs.china@sgs.com)